





Roadway Marking & Grinding Equipment

Roadway Marking Material & Supplies

Workzone - Traffic Safety Equipment

Parking Lot Products

Safety Clothing & Specialty PPE

ADA – Safety Step

Signs & Posts

Specialty Products

Equipment Repair

Tools & Paint Sundries

Education & Training



Thermoplastic Spray

Alamo Materials Brand Alkyd Ribbon/Spray Thermoplastic is a solids blend of binder, pigments, and glass beads.

Product Advantages:

- Non-flammable and below 150 VOC
- Has the best bead retention and abrasion resistance
- Fast set up times
- Can be used for symbols, legends, and lane marking
- Low cost per useful life

Profiled Thermoplastics

Profiled thermoplastics are sprayed or extruded thermoplastic markings that are constructed with an alternating elevated and recessed profile. The purpose of the profiled pattern is to provide nighttime retro reflectivity under wet conditions, and in cases where the profiles are large enough, a rumble effect can be felt when driving over the markings.

The elevation-recession pattern may be placed using one of many methods. The two most popular methods are inverted-profile markings and raised-profile markings.



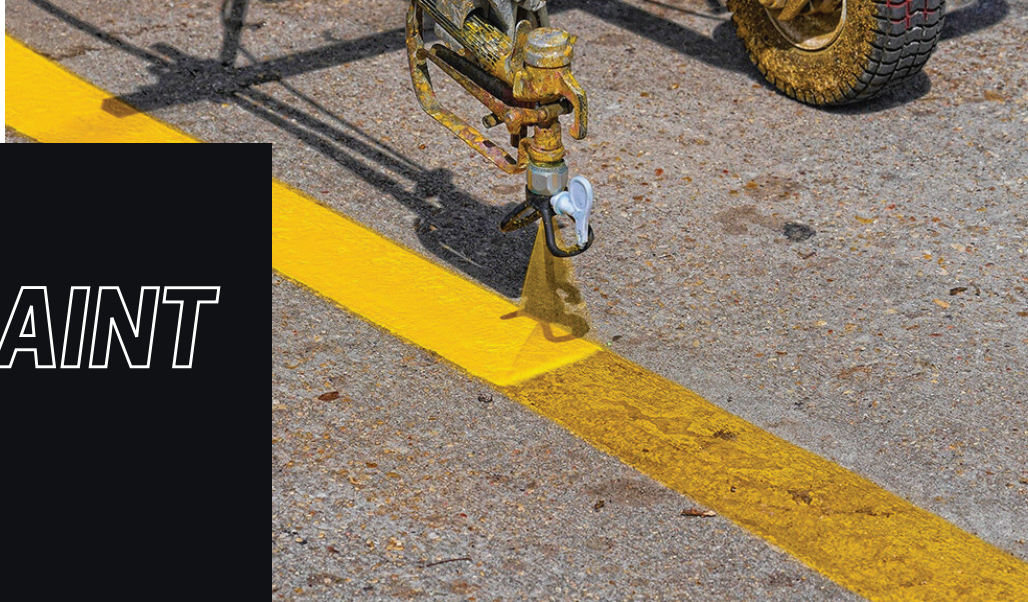
Preform Thermoplastic

Alamo Materials Brand Alkyd Preformed Thermoplastic is a pre-extruded blend of binder, pigments and glass beads that can be applied on substrates at 32°F and rising, using an open flame application.

Product Advantages:

- Non-flammable and below 150 VOC
- Has the best bead retention and abrasion resistance
- Can release to traffic quickly
- Can be used for symbols, legends, and lane marking
- More durable than thermoplastic or water-based paint and does not require special equipment.

Our Thermoplastic roadway products are made from quality tested ingredients using recipes containing the highest grade of materials, which are laboratory evaluated for quality control that meet the standards and requirements of Texas Department of Transportation (TXDOT), right here in San Antonio, Texas.



MARKING PAINT TRAFFIC

HIGH PERFORMANCE ACRYLIC

Precisely formulated with acetone based acrylic copolymers, this line exceeds the performance and durability of industry standards. Enduracryl offers increased color retention and adhesion, while resisting abrasion, fade, and dirt pick-up.

Available in lines with VOC under 150 g/L or 250 g/L.
Available in white, yellow, black, blue, red, green.

- High binder content
- Most durable acrylic
- Stays cleaner and lasts longer
- Less re-stripping needed
- Resists everyday wear and tear
- Excellent color retention properties
- Exhibits a smoother appearance

SOLVENT BASED ACRYLIC

The addition of acrylic copolymers cut in acetone provide increased longevity, while decreasing the risk of fading, chalking, and peeling. Our solvent-based acrylic is highly tolerant to severe weather conditions and promotes excellent block resistance.

Available in 150 g/L and 250 g/L formulations.
Available in white, yellow, black, blue, red, green, orange.

- More forgiving surface preparation
- Wider temperature window for application
- Suitable for colder temperatures
- Promotes a longer service life and extended durability
- Quick dry time

CHLORINATED RUBBER

An acetone-based product that incorporates a chlorinated rubber binder to enhance film durability. Ideal for use in high traffic areas, this solventborne solution aids in the longevity of applications over concrete sealers and membranes, like those frequently used in parking structures.

Available in white, yellow, black, blue, and several red and green color options.

- Best adhesion over concrete sealers/membranes
- Less re-stripping needed in high traffic areas
- Prevents rusting and deterioration
- Dedicated color formulations - no washed out blends
- Excellent durability
- Resists cracking
- Expands and contracts with temperature changes
- Excellent line definition

LATEX SOLUTIONS

Available in both regular (Type I) and fast dry (Type II) systems, our line of latex products are user-friendly and deliver highly visible and clean lines to areas and projects that require markings and/or traffic control. With easy application, removal, and non-yellowing properties, latex is ideal for long term flexibility.

Often called "high build," our Type III latex products create thicker, more durable markings through the use of a unique latex binder that chemically bonds to itself, strengthening the integrity of the surface to which it is applied. Type III products retain the clean lines and ease of use found in our other latex products.

Available in white, yellow, black, blue, purple, and several red and green color options.

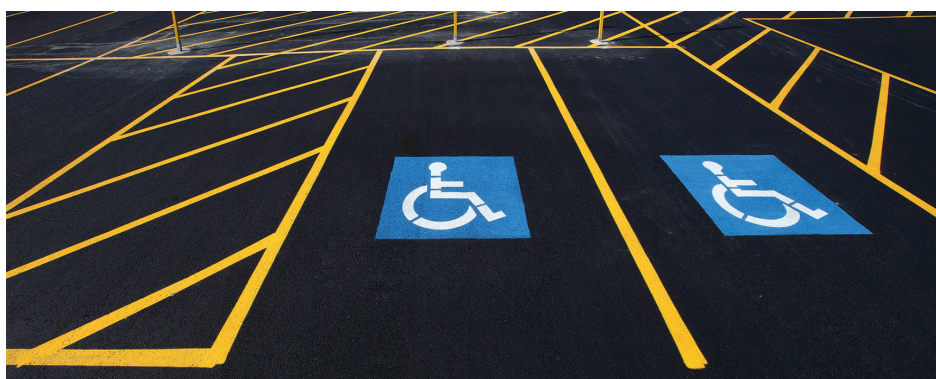
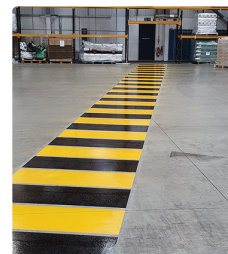
- Bright, fade resistant colors
- Quick dry times
- Extended durability
- Long lasting performance
- Promotes clean application
- Non-flammable; no solvent cleanup
- Excellent bead retention
- Exceeds TT-P-1952F requirements

ALKYD/ACRYLIC BLEND

Ideal for use on concrete, asphalt, and brick, our alkyd/acrylic blend is highly recommended for restriping purposes. The combination of traditional alkyd binder and acrylic copolymer provides a VOC compliant product that possesses the flexibility and adhesion advantages of alkyd resin.

Available in white, yellow, black, blue, red, green.

- Longer open time for glass bead penetration
- Better expansion/contraction with temperature changes
- Good adhesion when restriping
- Faster dry times than conventional alkyd paints
- Quick project turnaround time





**EXCEEDING
INDUSTRY
STANDARDS.**



**INNOVATION
IN
EVERY
LINE.**

WHAT WE OFFER

- ENDURACRYL HIGH PERFORMANCE ACRYLIC
- 20% ACRYLIC SOLUTION - THERMO SEALER
- SOLVENT BASED ACRYLIC
- CHLORINATED RUBBER
- ALKYD/ACRYLIC BLEND
- REGULAR DRY LATEX
- FAST DRY LATEX



DURABILITY

Recognizing the need for quality, durable products to maintain our roadways, our formulations have been specially crafted to contain properties that resist damage caused by heavy traffic, dirt and debris, weather conditions, and the environment.



CONSISTENCY

Engineered using the highest quality raw materials, our batch consistency is an integral part of our success, delivering smooth, clean lines with excellent color retention, coverage, and fade resistance.



PERFORMANCE

Our traffic marking paints provide exceptional adhesion to concrete and asphalt when line striping. This increases its ability to resist fading and deterioration, only amplified with excellent hiding and application properties.

Putting our product on the line for *your success.*



- CURBS
- MEDIANS
- SIDEWALKS
- BIKE PATHS
- CROSSWALKS
- STOP BARS
- AIRPORT RUNWAYS
- RACE TRACKS
- WAREHOUSE AISLES
- PARKING LOTS
- ASPHALT
- CONCRETE
- CONSTRUCTION SITES
- ROADWAYS
- HIGHWAYS
- DRIVEWAYS
- PLAYGROUNDS
- BRICK/MASONRY

QUALITY

INTEGRITY

SERVICE



SAFETY PRODUCTS & MATERIALS FOR TRANSPORTATION

Transpo Industries, Inc. manufactures and distributes a variety of innovative products and materials designed to improve road safety. Transpo's reputation as an expert in roadway safety has made Transpo a leading supplier serving the transportation industry since 1968.



Color-Safe®

Color-Safe® durable color pavement markings are the most cost effective, high definition color markings on the market today. This MMA material is your solution to long lasting pavement marking requirements. It is capable of full cure in a wide range of temperatures down to 40° F, extending the marking season, and works on both concrete and asphalt surfaces.



Break-Safe®

Break-Safe® Breakaway Support System for ground mounted signs supports a wide range of post sizes, up to and including the largest permitted by AASHTO. The Omni-Directional design breaks away with consistent, predictable behavior, regardless of the vehicle's angle of impact, saving lives, reducing property damage and allowing rapid re-installation to get signs back into use quickly.



Pole-Safe®

Pole-Safe® Breakaway Support System uses an omni-directional coupling that breaks away quickly and cleanly upon impact saving lives and in many cases allowing the light pole to be reused. The high-strength coupling is designed for use on a large range of light poles. Low initial cost, high structural capacity and zero maintenance makes Pole-Safe® the most cost-effective solution for breakaway applications.



Screen-Safe®

Screen-Safe® protects drivers and work zone crews from headlight glare and debris with a barrier fence. It is maintenance free and simple to install on both guard rail and concrete barrier. It is easily the most durable and effective glare screen in use on roadways today and excellent for both permanent installations and work zone applications.

High Friction Surface Treatments (HFST)

These treatments significantly increase surface friction reducing run off the road accidents on hazardous curves. Transpo offers two binders for HFST: Transpo's T-28 HFST Methyl Methacrylate (MMA) resin binder and Transpo's E-Bond 526 HFST Epoxy resin binder. Both are capable of rapid cure on concrete and asphalt surfaces, and when incorporated with broadcast aggregate these high friction surface treatments can greatly reduce accident and fatality rates on hazardous roadways.

Epoxy Resin Binder (E-Bond 526 HFST)
MMA Resin Binder (T-28 HFST)



COLOR-SAFE® PAVEMENT MARKING (MMA)

Applications

Transpo's Color-Safe® can be used with different sizes and types of aggregate as an anti-skid surface and/or for demarcation.

- Bike lanes and bike boxes
- Pedestrian refuge areas and plazas
- Crosswalks and decorative pavements
- Roundabouts
- Bus lanes
- Toll lanes
- Airfields



Features and Advantages

- Excellent color retention and durability
- High visibility color increases motorist awareness
- Available in a variety of colors
- Easy application
- Fast cure time
- Wide application temperature range (40°- 100°F)
- Low life cycle cost
- Ability to adhere to both concrete and asphalt surfaces

COLOR-SAFE® AIRFIELD PAVEMENT MARKING



Features and Advantages

- Easy to apply / no special equipment or heat is required for installation
- Can be installed by airport personnel
- Wide application temperature range (40°-100°F)
- Cures fast / ready for aircraft and vehicle traffic in 30 to 60 minutes at 70°F

Easily Modified

- Add hi-index airport glass beads to increase retro-reflectivity and maximize pilot visibility
- Add an aggregate for a more skid-resistant surface
- Apply new colors over existing markings when necessary

Applications

Transpo's Color-Safe® can be used with aggregate as an anti-skid surface and/or for demarcation.

- Airside Markings
- Landside Crossmarks
- Specialty Lanes

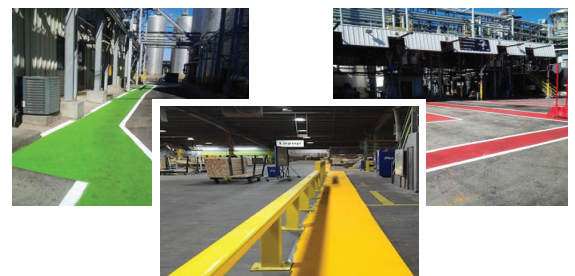


COLOR-SAFE® INDUSTRIAL SAFETY MARKING

Applications

Transpo's Color-Safe® can be used for interior and exterior applications with different sizes and types of aggregate as an anti-skid surface and/or for demarcation.

- Warehouse Isles
- Forklift Travel Way
- Loading Docks
- Parking Areas
- Traffic Travel Direction
- Crosswalks
- Parking Lots & Garages



DURABLE & HIGH DEFINITION COLOR

THERMOPLASTIC APPLICATORS

Applicator Units

Alamo Traffic Supply carries multiple vendors and models in both skid and trailer-mount varieties depending on your need.



ThermoLazer 200TC

- 200 pound material capacity offers great production with an easy to maneuver handliner.
- Removable kettle simplifies color change within minutes.
- Steel dies that keep the material hot and flowing correctly for perfect lines every time.
- Auger agitation to lift and pull thermoplastic for kettle temperature uniformity, top to bottom.



LineDriver HD

- 6.5HP with easy start feature.
- Hydrostatic drive both forward and reverse.
- Why push 600 pounds of equipment/material when you can let the Linedriver do the work?

ThermoLazer ProMelt

- 300 pound capacity and more BTU's for faster melt times for up to 40 bags per day use.
- Steel dies with enclosure that "keeps the heat" on the die for uniformity.
- Dies widths range from 2" to 16" with simultaneous 3" - 6" dual lines with spacers 3"- 6".
- Geometrically designed for perfect straights and curves without binding.

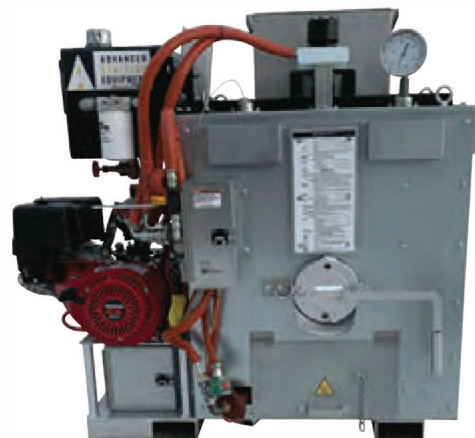
	User Profile	Melt Time - 300 lbs (w/o Premelter)	Material Capacity	LineDriver Compatible
THERMOLAZER 200TC	Existing thermoplastic striper with premelting system that requires a compact, lightweight handliner.	Up to 2.5 hours	200 lbs	No
THERMOLAZER 300TC	Existing thermoplastic striper with premelting system that requires a higher-capacity handliner that can be used with a LineDriver.	Up to 4.5 hours	300 lbs	Yes
THERMOLAZER PROMELT	New or existing thermoplastic striper that wants to do small to medium jobs without a premelting system.	1 to 1.5 hours	300 lbs	Yes

THERMOPLASTIC PREMELTERS

Thermoplastic Premelters

Premelters dramatically increase production by operating as a feed source for Graco thermoplastic Applicators. Easily jump your production from as little as 15 bags per day to 150-200 bags per day.

- Available in sizes from 500 pound to 2000 pounds models.
- Available in Skid configuration for mounting on your truck or trailer.
- Full range of trailer packages that offer a self-contained package that carries everything you need.



Trailer Packages

- Above skid models mounted on properly sized custom trailers that can allow one turnkey.
- Package that delivers all required materials and equipment to the jobsite.
- Single or dual configurations.
- Meets and exceeds ALL highway regulations.
- Custom trailer designs and layout available on request.
- Swing gates and lift gates included on 1000, 1500 and 2000 pound models. Optional on others.

Skid Mounts

- 500, 650, 750, 1000, 1500, and 2000 pound units are available in single or dual color.
- Fork lift slot enabled for easy placement and removal.
- 500, 650, and 750 pound models weigh about 1000 pounds so are suitable for use with a properly sized pick up.
- 1000, 1500, and 2000 pound models feature safety feed doors.
- Over temperature control shut off.

REMOVAL EQUIPMENT



	Smith FS200	Smith FS209	Smith SPS8	Smith SPS10
Power	5.5HP Honda	9HP Honda	9HP Honda	13HP Honda
Cut Width	≤ 8" pp (20cm)	≤ 8" pp (20cm)	≤ 8" pp (20cm)	≤ 10" pp (25cm)
Weight	125lbs w/o drum	125lbs w/o drum	225lbs w/o drum	250lbs w/o drum
Dimensions	42" L x 14" W x 39" H	42" L x 14" W x 39" H	38" L x 19" W x 44" H	38" L x 19" W x 44" H
Optional	Electric Power Cutter Drum Assemblies Edger	Cutter Drum Assemblies Edger	Electric Power Cutter Drum Assemblies	Electric Power Cutter Drum Assemblies Edger

*All Smith grinding units are compatible with a variety of cutter drum assemblies based on your chosen model. Use the below graphic to determine your unit's range of compatible drum assemblies.



Flails



Smith Flail-It Cutters are made with SAE steel and tungsten carbide for durable performance, texturizing, or for a final non-slip finish on trip hazards.

PROS: Affordable and extremely versatile.

CONS: Flail Cutters wear out much faster than PCDs and need replacement more often.

PCDs



Smith PCD Cutters and Drums use a self-sharpening polycrystalline diamond technology to gently shave the surface. They last up to 30 times longer than carbide cutters and cut up to 4 times faster than diamond blades so you can finish your job quicker.

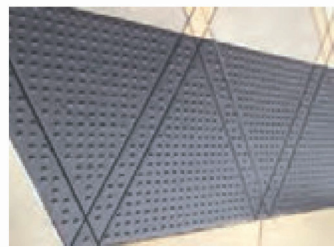
PROS: Twice as fast as carbide flails, significantly longer lasting.

CONS: Higher upfront cost. Cannot be run with upcut systems.

SafetyStepTD

The flexibility of SafetyStepTD systems will allow the mat to follow the contour of the substrate, which will ensure optimal adhesion. This feature, along with the strength of our adhesive, allows us to offer an anchor free system, eliminating the use of any mechanical fasteners or pins when using our products.

SSTD is available in multiple colors



*Safety Step products and systems meet ADA Federal requirements and the ADA Accessibility Access Guidelines (ADAAC).

The SafetyStepTD (SSTD) family of products are available in 3 primary options.

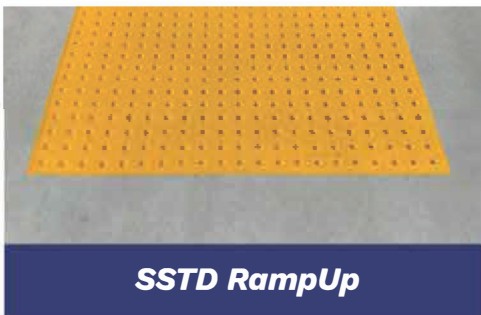


SSTD Traditional

SSTD Traditional mats can easily be cut to fit custom curves and shapes using adhesives and coatings to be easily applied to existing concrete or asphalt.

SSTD Traditional system allows for longer run applications, radius conditions, and for the ease of custom cuts in the field.

Available Sizes: 2'x10', 3'x10'



SSTD RampUp

SSTD RampUp is a pre-molded mat that is used where ADA, transit, or building codes require a tactile warning surface.

Like all SafetyStepTD systems, SSTD RampUp will adhere not only to concrete and asphalt, but to other materials as well, such as tile, brick, granite, and other solid/sound surfaces.

Available Sizes: 3'x4', 3'5', 2'x4', 2x5'



SSTD POWERBOND

SSTD POWERBOND uses a peel and stick technology on a flexible cement mat with wear resistant and UV protective resins.

With the SSTD POWERBOND peel and stick technology, this tactile warning device allows for an easy installation process while securing a wear resistant finish that can be installed directly over asphalt.

Available Sizes: 3'x4', 3'5', 2'x4', 2x5'



CALL FOR PRICING

FORT WORTH

(817) 309-7736

4112 Glenview Drive
Haltom City, TX 76117

HOUSTON

(281) 607-8548

6314 Theall Road
Houston, TX 77066

SAN ANTONIO

(210) 245-9603

5510 Brewster Street
San Antonio, TX 78233

Toll Free (855) 800-7257 (PALS)

Do More with Less with ATS

WWW.ALAMOTRAFFICSUPPLY.COM